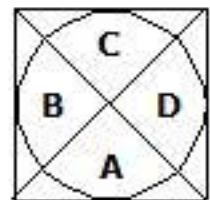
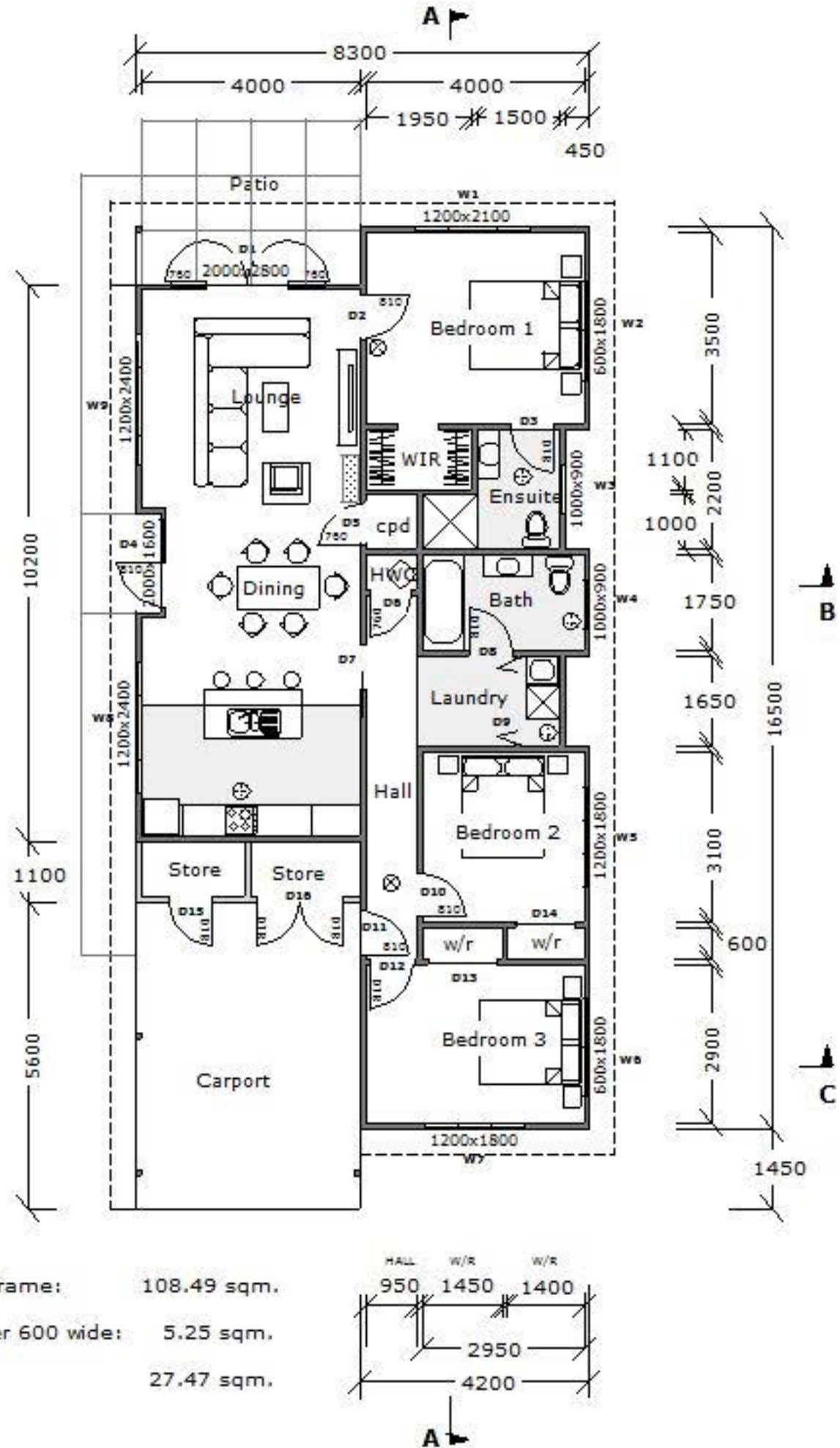


WIND ZONE: Medium
 EXPOSURE ZONE: B
 EARTHQUAKE ZONE: 2
 SNOW LOADING: N5
 CLIMATE ZONE: 3



ELEVATION KEY

Total area over frame: 108.49 sqm.
 Area of soffit over 600 wide: 5.25 sqm.
 Carport + stores 27.47 sqm.



- ⊗ Indicates position of battery operated hush button smoke alarm. Should be fixed to, or near, the ceiling with test button easily accessible.
- Indicates areas to have sheet vinyl flooring. 100mm coving in bathrooms.
- ⊕ Indicates mechanical ventilation. Rangehood over hob in kitchen. Thru wall fan in laundry - 85m³/hr e.g. Manrose XP100S. Thru wall fan in bathrooms - 130m³/hr e.g. Manrose XPLP 125 ST.
- ⊞ Heat pump shown is a Daikin floor-standing L series FVX560LVMA

Standard 90x45 wall framing, kiln dried and H1.2 treated with doubled top plate and 2 rows dwangs.
 Cladding: vertical 5-rib Colorsteel and James Hardie Oblique horizontal weatherboards.
 Aluminium exterior joinery with double-glazing.

RISK MATRIX

Wind zone	Medium	0
No. of storeys	One	0
Roof/Wall	Low	0
Eaves width	Medium	1
Envelope comp.	Medium	1
Decks	No	0
TOTAL		2

Applies to all elevations
 Direct-fix OK.

